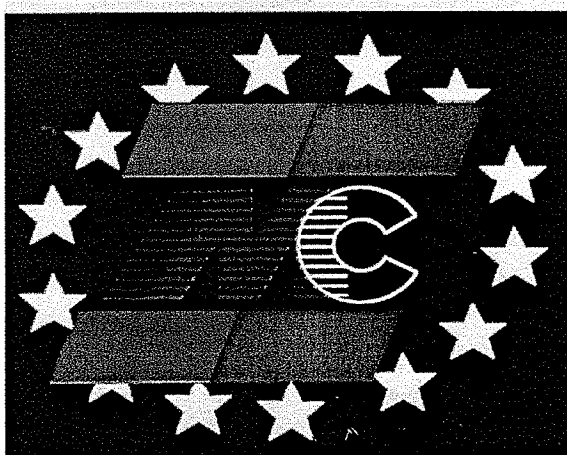




Recauchutagem

MARAVILHA DO CAVADO

REVIVE



CATALOGO

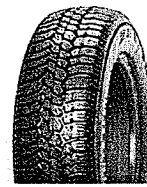
RECAUCHUTAGEM

2011

RECAUCHUTAGEM A QUENTE

LIGEIROS - TURISMO

Jante	Medida	Piso	
		N/ Integral	Integral
10"	145 R 10	MC-10	
12"	155 R 12	MCTE-70	
13"	135/80R13		MCT-80
	145/80R13		MCT-80
	155/80R13		MCTE-80
	165 R 13	MCV	
14"	175 R 14	MCV	
	185 R 14	GPS	
15"	165 R 15	MCV	
SÉRIE 70			
10"	165/70 R 10	MC-10	
13"	145/70 R 13		MCTE-70
	155/70 R 13		MCTE-70
	165/70 R 13		MCTE-70
	175/70 R 13		MCV-3
14"	195/70 R 14	MCV	
SÉRIE 65			
13"	165/65 R 13		MCTE-70
14"	165/65 R 14		MCTE-70
	175/65 R 14		MCV-3
SÉRIE 60			
13"	175/60 R 13		MCH-1
	185/60 R 13		SPORT
14"	185/60 R 14		MCV-3/SPORT
	195/60 R 14		SPORT
15"	205/60 R 15		SPORT
SÉRIE 55			
14"	185/55 R 14		SPORT
SÉRIE 50			
15"	195/50 R 15		SPORT



MCT-80



MCTE-80



MCTE-70



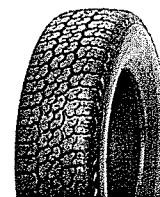
MCV-3



MCH-1



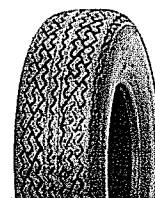
SPORT



GPS



MCV



MC-10

RECAUCHUTAGEM A QUENTE

COMERCIAIS / CAMIONETA

Jante	Medida	Piso	
		N/ Integral	Integral
13"	145 R 13	MCT-80	
	155/80 R 13	MCT-80	
	165/70 R 13	MCTE-70	
	165 R 13	MCV	
14"	175 R 14	MCV	
	185 R 14	WCR / GPS	MCA / AW
	195 R 14	WCR	MCA-1 / AGIL
	175/75 R 14	MCV	
	185/75 R 14	WCR / GPS	MCA / AW
	195/75 R 14	WCR	
	175/65 R 14	MCV-3	
15"	185 R 15	WCR	
	700 R 15	COR/HCT/SAT	
	750 R 15	HCT/CORRIDO	
	17 R 15	WCR	
	195/70 R 15		AGIL
16"	650 R 16	CORRIDO/MCA1/ HCT/ SAT/MZT	
	700 R 16	CORRIDO/MCA/H CT/ SAT/MZT	
	750 R 16	CORRIDO / SAT	
	825 R 16	CORRIDO	
	195/75 R 16		MCA
	215/75 R 16		AGIL



GPS



MCTE-80



MCTE-70



MCV



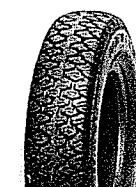
MCV-3



MCA1



MCA



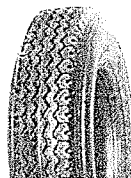
AW



AGIL



WCR



CORRIDO



HCT



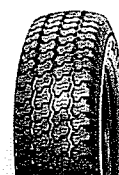
SAT



MZT

JEEP

Jante	Medida	Piso	
		N/ Integral	Integral
15"	195 R 15		MCGW
	215 R 15		MCGW
	215/80 R 15		MCGW
	215/75 R 15		MCGW
	235/75 R 15		MCGW
16"	600 x 16		MILITAR
	650 x 16		SAT
	700 x 16		SAT
	750 R 16		SAT
	205 R 16		MCS-244
	205/80 R 16		MCS-244
	235/70 R 16		MCGW



MCGW



MCS-244



MILITAR

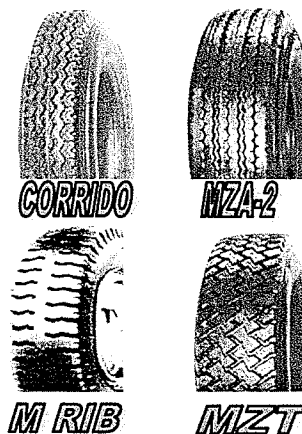


SAT

RECAUCHUTAGEM A QUENTE

CAMIÃO - AUTOCARRO

Jante	Medida	Piso direccional	Piso Tracção
17.5"	8.5 R 17.5	MZA	
20"	8.25 R 20	CORRIDO	
	C - 20 / 9.00 R 20	CORRIDO	
	D - 20 / 10.00 R 20	CORRIDO	
	E - 20 / 11.00 R 20	MZA-2	M RIB
	F - 20 / 12.00 R 20	MZA-2	MZT
22.5"	12 R 22.5	MZA-2	
	13 R 22.5	MZA-2	MZT
	E - 22.5 PILOT (315/80 - 22.5)		MZT



INDUSTRIAIS

I - INDUSTRIAIS - EMPILHADOR

Jante	Medida	Piso
9"	600 x 9	ME-1
12"	7.00 x 12	ME-1



II - RETROESCAVADORA / BOBCAT

Jante	Medida	Piso
18"	10.5 x 18	MI-2
	12.0 x 18	MI-1
	12.5 x 18	MI-1
	10.5/80 x 18	MI-2
	12.5/80 x 18	MI-1
20"	11.2 x 20	MI-1
	10.5 x 20	MI-1
	300/70 x 20	MI-1



RECAUCHUTAGEM A QUENTE

TRACTOR

I – TRACTOR DIANTEIRO

Jante	Medida	Piso
16"	550 x 16	MA-3
	600 x 16	MA-3/MA-4
	650 x 16	MA-3
	700 x 16	MA-3
	750 x 16	MA-3
18"	250/80X18	MA-2



MA-3



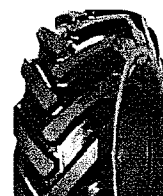
MA-4

II – TRACTOR TRASEIRO

Jante	Medida	Piso
20"	11.2/10.5 x 20	MI-1
28"	12.4/11 x 28	MA-1



MA-1



MI-1

MOTOCULTIVADOR - UNIMOG/MILITAR

Jante	Medida	Piso
16"	9.0/75 R 16 - 750 x 16	MA-2
18"	250/80 R 18 / 750 x 18	MA-2



MA-2

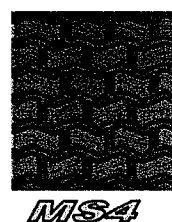
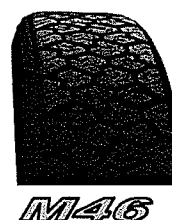
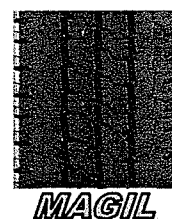
RECAUCHUTAGEM PRÉ – MOLDADO (FRIO)

PISOS PRÉ-VULCANIZADOS - STANDARD

(recomendado para utilização em trajecto regional)

JEEP

Jante	Medida	Direcção Piso	Tracção	
			Estrada	Fora estrada
15"	195 R 15	MAGIL	MS4 / M46	MST
	215 R 15	MAGIL	MS4 / M46	MST
	30 x 9.50 R 15	MAGIL	MS4 / M46	MST
	31 x 10.50 R 15	MAGIL	MS4 / M46	MST
	32 x 11.50 R 15	MAGIL	MS4 / M46	MST
	33 x 12.50 R 15	MAGIL	MS4 / M46	MST
	215/80 R 15	MAGIL	MS4 / M46	MST
	205/75 R 15	MAGIL	MS4 / M46	MST
	215/75 R 15	MAGIL	MS4 / M46	MST
	225/75 R 15	MAGIL	MS4 / M46	MST
	235/75 R 15	MAGIL	MS4 / M46	MST
	255/75 R15	MAGIL	MS4 / M46	MST
	265/75 R 15	MAGIL	MS4 / M46	MST
	205/70 R 15	MAGIL	MS4 / M46	MST
	215/70 R 15	MAGIL	MS4 / M46	MST
	225/70 R 15	MAGIL	MS4 / M46	MST
	235/70 R 15		MS4 / M46	MST
	255/70 R 15		MS4 / M46	MST
	265/70 R 15		MS4 / M46	MST
	255/60 R 15		MS4 / M46	MST
275/60 R 15		MS4 / M46	MST	
16"	205 R 16	MAGIL	MS4 / M46	MST
	215/85 R 16	MAGIL	MS4 / M46	MST
	235/85 R 16	MAGIL	MS4 / M46	MST
	205/80 R 16	MAGIL	MS4 / M46	MST
	215/80 R 16	MAGIL	MS4 / M46	MST
	225/75 R 16	MAGIL	MS4 / M46	MST
	245/75 R 16		MS4 / M46	MST
	265/75 R 16		MS4 / M46	MST
	235/70 R 16		MS4 / M46	MST
	245/70 R 16		MS4 / M46	MST
	265/70 R 16		MS4 / M46	MST
	275/70 R 16		MS4 / M46	MST
	255/65 R 16		MS4 / M46	MST
	225/60 R 16		MS4 / M46	MST



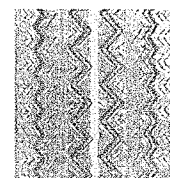
RECAUCHUTAGEM PRÉ – MOLDADO (FRIO)

PISOS PRÉ-VULCANIZADOS - STANDARD

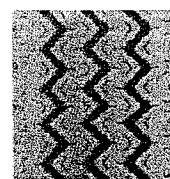
(recomendado para utilização em trajecto regional)

COMERCIAIS - MÉDIOS

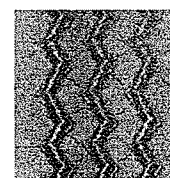
Jante	Medida	Piso	Estrada	Fora estrada
12"	5.00 R 12	MMT	MS4	
	155 R 12	MMT	MS4	
13"	145 R 13	MMT	MS4	
	155 R 13	MMT	MS4	
	165/70 R 13	MMT	MS4	
14"	165 R 14	MMT	MS4	
	175 R 14	MMT	MS4	
	185 R 14	MAGIL / MLIG	MS4 / M46	MST
	195 R 14	MAGIL / MLIG	MS4 / M46	MST
	205 R 14	MAGIL / MLIG	MS4 / M46	MST
	215 R 14	MAGIL / MLIG	MS4 / M46	MST
	165/75 R 14	MAGIL / MLIG	MS4 / M46	MST
	175/75 R 14	MAGIL / MLIG	MS4 / M46	MST
	185/75 R 14	MAGIL / MLIG	MS4 / M46	MST
	195/75 R 14	MAGIL / MLIG	MS4 / M46	MST
	205/75 R 14	MAGIL / MLIG	MS4 / M46	MST
	215/75 R 14	MAGIL / MLIG	MS4 / M46	MST
	165/70 R 14	MMT	MS4	
	175/65 R 14	MMT	MS4	
15"	185 R 15	MAGIL / MLIG	MS4 / M46	MST
	195/70 R 15	MAGIL / MLIG	MS4 / M46	MST
	215/70 R 15	MAGIL / MLIG	MS4 / M46	MST
	225/70 R 15	MAGIL / MLIG	MS4 / M46	MST
	215/65 R 15	MAGIL / MLIG	MS4 / M46	MST
	17 R 15	MAGIL / MLIG	MS4 / M46	MST
	670 x 15	MAGIL / MLIG	MS4 / M46	MST
	700 x 15	MZA / MLIG / MAGIL	MS4 / M46	MST
	750 x 15	MZA / MLIG / MAGIL	MS4 / M46	MST
	825 x 15	MZA / MLIG / MAGIL	MS4 / M46	MST
1000 R 15	MZA / MLIG / MAGIL	MS4 / M46	MST	
16"	175 R 16	MAGIL / MLIG	MS4 / M46	MST
	185 R 16	MAGIL / MLIG	MS4 / M46	MST
	195 R 16	MAGIL / MLIG	MS4 / M46	MST
	205 R 16	MAGIL / MLIG	MS4 / M46	MST
	215 R 16	MAGIL / MLIG	MS4 / M46	MST
	175/75 R 16	MAGIL / MLIG	MS4 / M46	MST
	185/75 R 16	MAGIL / MLIG	MS4 / M46	MST
	195/75 R 16	MAGIL / MLIG	MS4 / M46	MST
	205/75 R 16	MAGIL / MLIG	MS4 / M46	MST
	215/75 R 16	MAGIL / MLIG	MS4 / M46	MST
	225/75 R 16	MAGIL / MLIG	MS4 / M46	MST
	195/65 R 16	MZA / MLIG / MAGIL	MS4 / M46	MST
	215/65 R 16	MZA / MLIG / MAGIL	MS4 / M46	MST
	225/65 R 16	MZA / MLIG / MAGIL	MS4 / M46	MST
	600 x 16	MZA / MLIG / MAGIL	MS4 / M46	MST
	650 x 16	MZA / MLIG / MAGIL	MS4 / M46	MST
	700 x 16	MZA / MLIG / MAGIL	MS4 / M46	MST
	750 x 16	MZA / MLIG / MAGIL	MS4 / M46	MST
825 x 16	MZA / MLIG / MAGIL	MS4 / M46	MST	



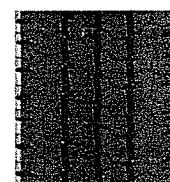
MMT



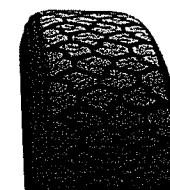
MLIG



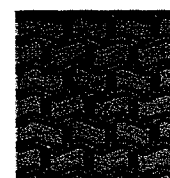
MZA



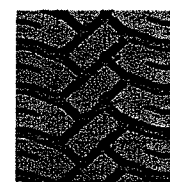
MAGIL



M46



MS4



MST

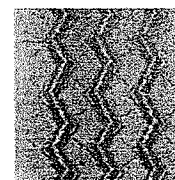
RECAUCHUTAGEM PRÉ – MOLDADO (FRIO)

PISOS PRÉ-VULCANIZADOS - STANDARD

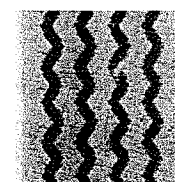
(recomendado para utilização em trajecto regional)

PESADOS

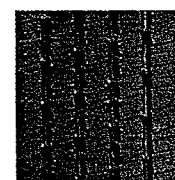
Jante	Medida	Piso	Piso
17.5"	7 R 17.5	MZA	MZT / MST
	8 R 17.5	MZA	MZT / MST
	8.5 R 17.5	MZA	MZT / MST
	9/9.5 R 17.5	MXZA / MZE2	MZT / MST
	10 R 17.5	MXZA / MZE2	MZT / MST
	205/75 R 17.5	MXZA / MZE2	MZT / MST
	215/75 R 17.5	MXZA / MZE2	MZT / MST
	225/75 R 17.5	MXZA / MZE2	MZT / MST
	235/75 R 17.5	MXZA / MZE2	MZT / MST
	245/70 R 17.5	MXZA / MZE2	MRC / MDE2
	265/70 R 17.5	MXZA / MZE2	MRC / MDE2
205/65 R 17.5	MXZA / MZE2	MZT / MST	
19.5"	7 R 19.5	MZA	MZT / MST
	8 R 19.5	MZA	MZT / MST
	9 R 19.5	MZA	MZT / MST
	9.5 R 19.5	MXZA / MZE2	MZT / MST
	18 R 19.5	MAZ	MZY3
	245/70 R 19.5	MXZA / MZE2	MRC / MDE2
	265/70 R 19.5	MXZA / MZE2	MRC / MDE2
	285/70 R 19.5	MXZA / MZE2	MRC / MDE2
	305/70 R 19.5	MXZA / MZE2 / MDA	MRC / MDE2 / MDY
	315/70 R 19.5	MXZA / MZE2 / MDA	MRC / MDE2 / MDY
	365/70 R 19.5	MAZ / MTA	MZY3
	445/65 R 19.5	MTA	
	425/55 R 19.5	MTA	
	445/45 R 19.5	MTA	
20"	600 x 20	MXZA / MZE2	MS4 / MST
	650 x 20	MXZA / MZE2	MS4 / MST
	700 x 20	MXZA / MZE2	MS4 / MST
	750 x 20	MXZA / MZE2	MS4 / MST
	825 x 20	MXZA / MZE2	MZT / MST
	C 20 - 900 x 20	MXZA / MZE2	MRC / MDE2
	D 20 - 1000 x 20	MXZA / MZE2	MRC / MDY / MDE2
	E 20 - 11.00 x 20	MXZA / MZE2	MRC / MDY / MDE2
	10.5 x 20	MXZA / MZE2	MRC / MDY / MDE2
	12.5 x 20	MXZA / MZE2	MRC / MDY / MDE2
	12.00 x 20	MXZA / MZE2	MRC / MDY / MDE2
	13/80 R 20	MXZA / MZE2	MRC / MDY / MDE2
	335/80 R 20	MAZ / MTA	MZY3
	14/80 R 20	MAZ / MTA	MZY3
	FD 20	MAZ / MTA	MZY3



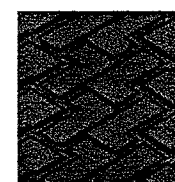
MZA



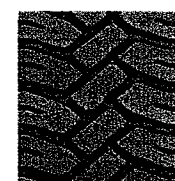
MXZA



MZE2



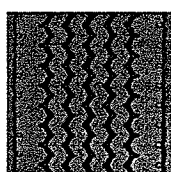
MZT



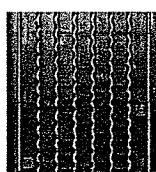
MST



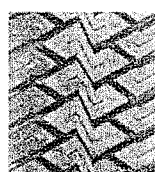
MS4



MAZ



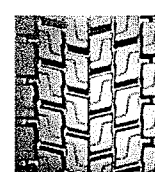
MTA



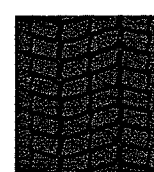
MRC



MDY



MDE2



MDA



MZY3

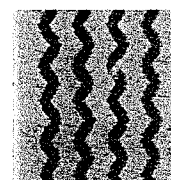
RECAUCHUTAGEM PRÉ – MOLDADO (FRIO)

PISOS PRÉ-VULCANIZADOS - STANDARD

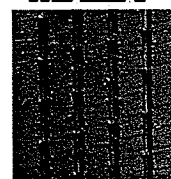
(recomendado para utilização em trajecto regional)

PESADOS

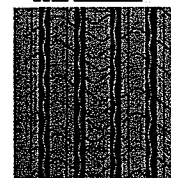
Jante	Medida	Piso	Piso
22.5"	8 R 22.5	MZA / MZE2	MZT
	9 R 22.5	MXZA / MZE2	MRC / MDE2
	10 R 22.5	MXZA / MZE2	MRC / MDE2
	11 R 22.5	MXZA / MZE2	MRC / MDE2
	12 R 22.5	MXZA / MZE2	MRC / MDE2 / MDY
	13 R 22.5	MXZA / MZE2	MRC-MDE2-MDY-MDY3-MDA
	275/80 R 22.5	MXZA / MZE2	MRC-MDE2-MDY-MDY3-MDA
	295/80 R 22.5	MXZA / MZE2	MRC-MDE2-MDY-MDY3-MDA
	315/80 R 22.5	MXZA / MZE2 / MZA2	MRC-MDE2-MDY-MDY3-MDA-MDA2
	315/75 R 22.5	MXZA / MZE2 / MZA2	MRC-MDE2-MDY-MDY3-MDA-MDA2
	350/75 R 22.5	MXZA / MZE2 / MZA2	MRC-MDE2-MDY-MDY3-MDA-MDA2
	255/70 R 22.5	MXZA / MZE2	MRC / MDE2 / MDY
	275/70 R 22.5	MXZA / MZE2	MRC / MDE2 / MDY
	295/70 R 22.5	MXZA / MZE2	MRC-MDE2-MDY-MDY3-MDA
	305/70 R 22.5	MXZA / MZE2	MRC-MDE2-MDY-MDY3-MDA-MDA2
	315/70 R 22.5	MXZA / MZE2 / MZA2	MDE2-MDY-MDY3-MDA-MDA2
	365/70 R 22.5	MZE2 / MAZ / MTA	
	385/65 R 22.5	MAZ / MTA	MZY3
	425/65 R 22.5	MTA	
	445/65 R 22.5	MTA	
24"	285/60 R 22.5	MXZA / MZE2	MRC-MDE2-MDY-MDY3-MDA
	295/60 R 22.5	MXZA / MZE2	MRC-MDE2-MDY-MDY3-MDA
	305/60 R 22.5	MXZA / MZE2 / MZA2	MRC-MDE2-MDY-MDY3-MDA-MDA2
	315/60 R 22.5	MZE2 / MZA2	MRC-MDE2-MDY-MDY3-MDA-MDA2
	18 R 22.5	MAZ / MTA	MS / MZY3
	385/55 R 22.5	MTA	
	1000 x 24	MXZA	MDY / MZH
	1100 x 24	MXZA	MDY / MZH
1200 x 24 - F 24	MXZA	MDY / MZH	
24.5"	305/75 R 24.5	MXZA	MDY



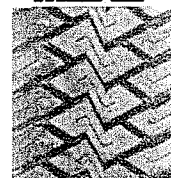
MXZA



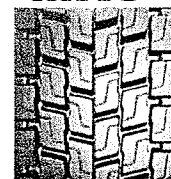
MXZE2



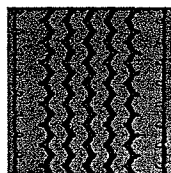
MZA2



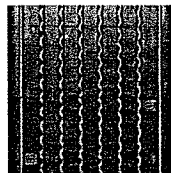
MRC



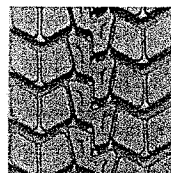
MDE2



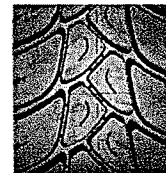
MAZ



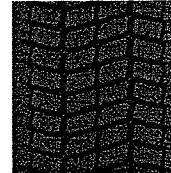
MTA



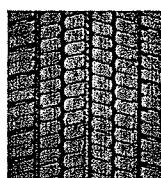
MDY



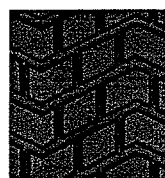
MDY3



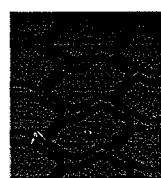
MDA



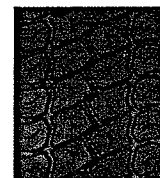
MDA2



MS



MZH



MZY3

RECAUCHUTAGEM PRÉ – MOLDADO (FRIO)

PISOS PRÉ-VULCANIZADOS - STANDARD

EMPILHADOR

Jante	Medida	Piso
8"	18/7 R 8	MLL
	500 x 8	MLL
9 "	600 x 9	MLL
	7 x 9	MLL
	21/8 R 9	MLL
10"	650 R 10	MLL
	750 R 10	MLL
	825 R 10	MLL
	23/9 R 10	MLL
	225/75 R 10	MLL
12"	700 x 12	MLL
	23/10 R 12	MLL
	27/10 R 12	MLL
15"	250 R 15	MLL
	700 x 15	MLL
	750 x 15	MLL
	815 x 15	MLL
	825 x 15	MRL
	28/9 R 15	MLL
20"	10,5/70 R 20	MSGL2



PNEUS GRUA

Jante	Medida	Piso tracção
20"	14.5 R 20	MS / MZH
24"	1400 R 24	MS
25"	1400 R 25	MS
	1600 R 25	MS

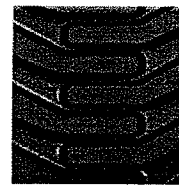


RECAUCHUTAGEM PRÉ – MOLDADO (FRIO)

PISOS PRÉ-VULCANIZADOS - STANDARD

RETROESCAVADORA / BOBCAT

Jante	Medida	Piso
15"	10.75 x 15.3	MSGL2
	11.5/80 x 15.3	MSGL2
16"	9.5/75 R 16	MSGL2
16.5"	10 x 16.5	MSGL2
	12 x 16.5	MSGL2
18"	10.5 x 18	MSGL2
	10.5/80 x 18	MSGL2
	12.0 x 18	MSGL2
	12.5 x 18	MSGL2
	12.5/80 x 18	MSGL2
	275/80 x 18	MSGL2
	335/80 x 18	MSGL2
19.5"	15 x 19.5	MSGL2
	18 x 19.5	MSGL2
20"	10.2 x 20 - 10.00 x 20	MSGL2
	10.5 x 20	MSGL2
	12.5 x 20	MSGL2
	335/80 x 20	MSGL2
	14.5 x 20	MSGL2
	375/70 x 20	MSGL2
	16/70 x 20	MSGL2
	405/70 x 20	MSGL2
22.5"	15 x 22.5	MSGL2



MSGL2

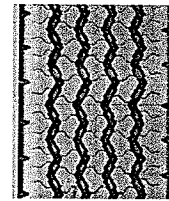
RECAUCHUTAGEM PRÉ – MOLDADO (FRIO)

PISOS PRÉ-VULCANIZADOS - PERFORMANCE

(recomendado para utilização em auto-estrada e longo curso)

PESADOS

Jante	Medida	Piso	Piso
17.5"	9/9.5 R 17.5	M27	
	10 R 17.5	M27	
	205/75 R 17.5	M27	
	215/75 R 17.5	M27	
	225/75 R 17.5	M27	
	235/75 R 17.5	M27	
	245/70 R 17.5	M27	
	265/70 R 17.5	M27	
19.5"	265/70 R 19.5	M27	
	365/70 R 19.5	M19	
	445/65 R 19.5	M19	
	425/55 R 19.5	M19	
	445/45 R 19.5	M19	
	295/80 R 22.5		M203
	315/80 R 22.5		M73 / M203
	315/75 R 22.5		M73 / M203
	295/70 R 22.5		M203
	305/70 R 22.5		M73 / M203
	315/70 R 22.5		M73 / M203
	365/70 R 22.5	M19 / M20	M32
	385/65 R 22.5	M19 / M20	M32
	425/65 R 22.5	M19 / M20	
	445/65 R 22.5	M19 / M20	
	385/55 R 22,5	M19	



M27



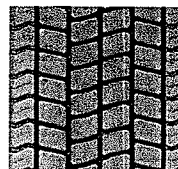
M19



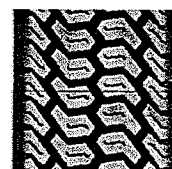
M20



M203



M73



M32